



## PROJECT REFERENCE

# AVALON EXETER

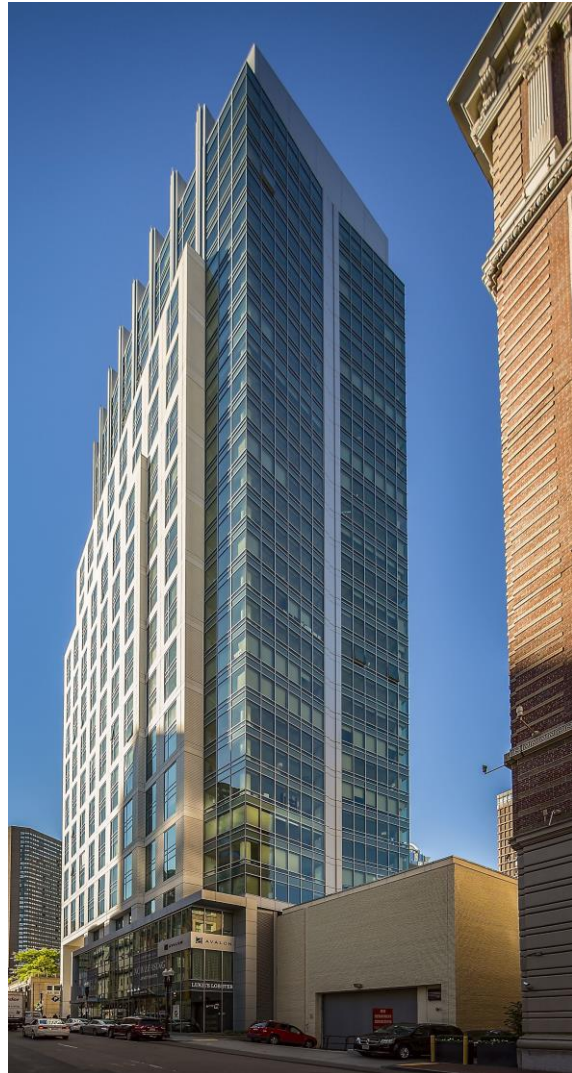
LOCATION:  
**Boston, MA**

CLIENT:  
**Avalon Bay Communities, Inc.**

ARCHITECT:  
**Elkus-Manfredi Architects**

GENERAL CONTRACTOR:  
**Avalon Bay Communities, Inc.**

SCOPE:  
• **IBG Custom unitized curtainwall**  
• **Operable windows**  
• **Two-story preglazed punched windows**



**Ipswich Bay Glass Company, Inc.**

420 Newburyport Turnpike, PO Box 511, Rowley, MA 01969 | p: 978-948-6644 | f: 978-948-2995 | sales@IBGlass.com | IBGlass.com