



PROJECT REFERENCE

225 BINNEY STREET

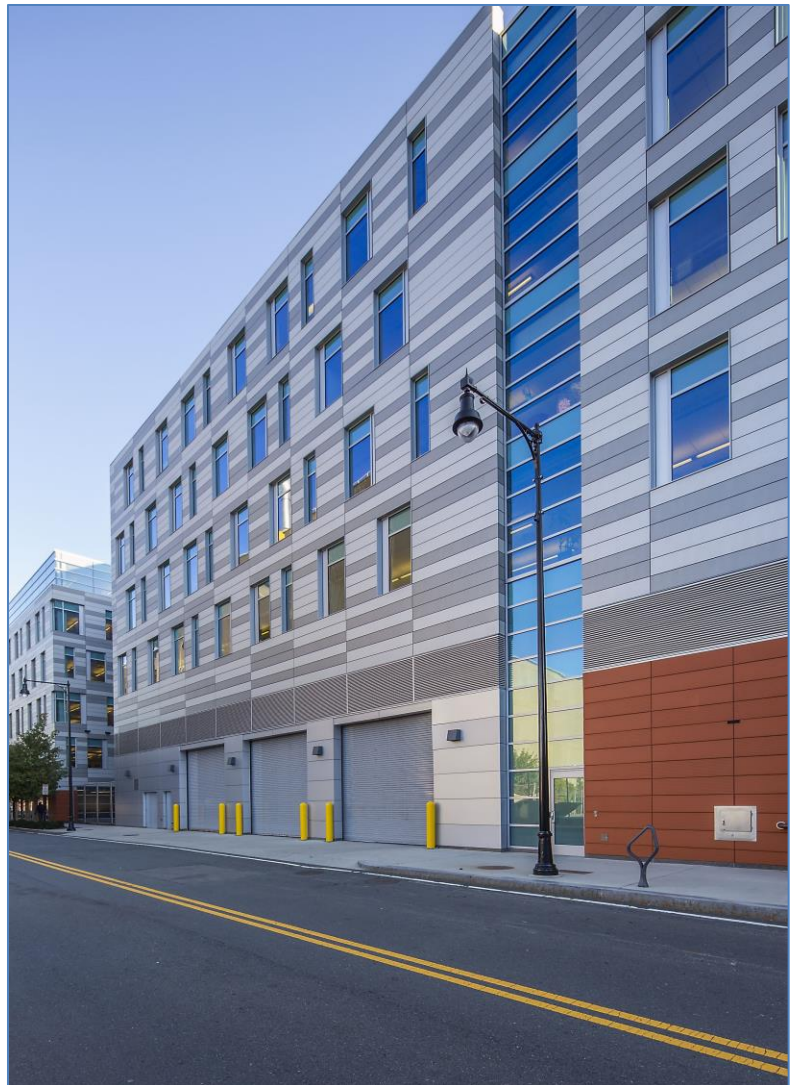
LOCATION:
Cambridge, MA

CLIENT:
Alexandria Real Estate Equities, Inc.

ARCHITECT:
Spagnolo Gisness & Associates

GENERAL CONTRACTOR:
Consigli Construction Co., Inc.

- SCOPE:
- Fiber reinforced cement rainscreen panels
 - Terracotta tiles
 - Composite panel rainscreen
 - Curtainwalls
 - Entrances



Ipswich Bay Glass Company, Inc.

420 Newburyport Turnpike, PO Box 511, Rowley, MA 01969 | p: 978-948-6644 | f: 978-948-2995 | sales@IBGlass.com | IBGlass.com