



PROJECT REFERENCE

450 KENDALL STREET

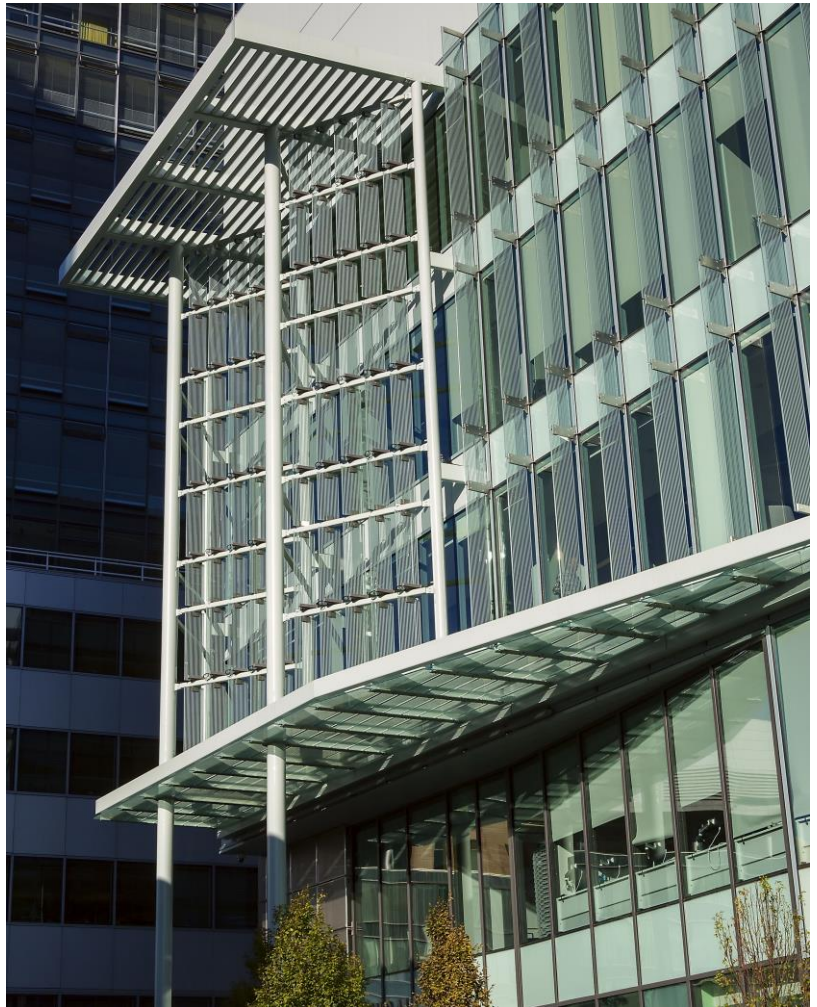
LOCATION:
Cambridge, MA

CLIENT:
BioMed Realty Trust

ARCHITECT:
Arrowstreet, Inc.

GENERAL CONTRACTOR:
John Moriarty & Associates

SCOPE:
• **Perforated stainless steel**
• **Custom sunshades**
• **Glass fins with stainless steel brackets**



Ipswich Bay Glass Company, Inc.

420 Newburyport Turnpike, PO Box 511, Rowley, MA 01969 | p: 978-948-6644 | f: 978-948-2995 | sales@IBGlass.com | IBGlass.com