



PROJECT REFERENCE

PFIZER

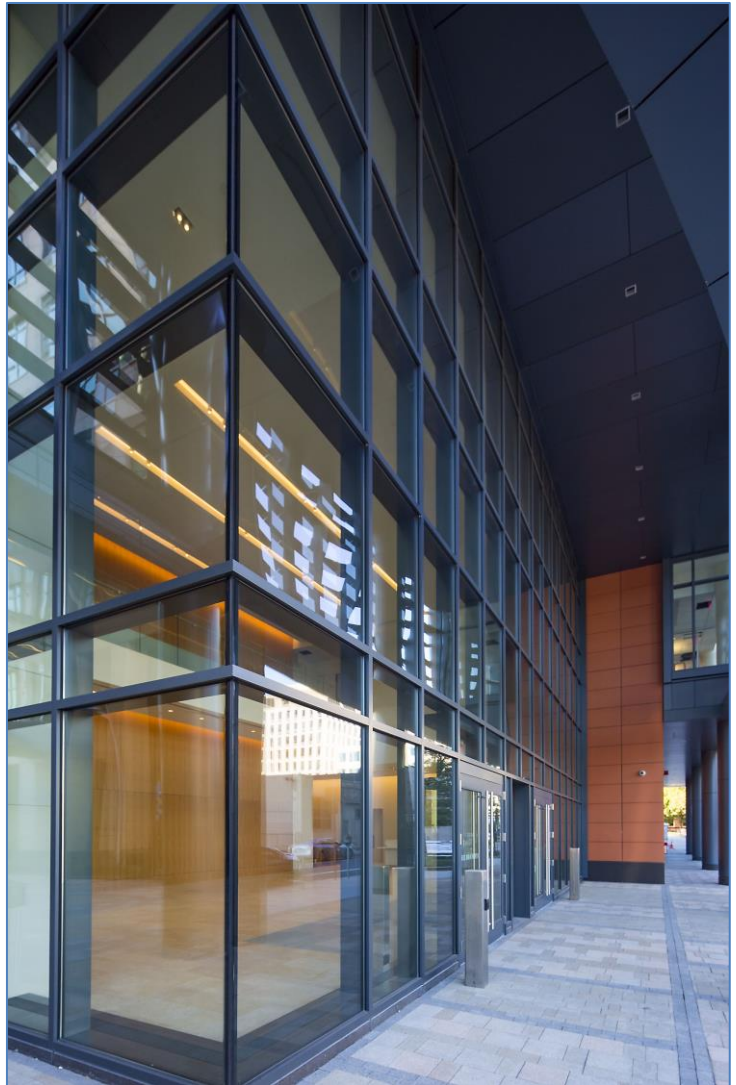
LOCATION:
Cambridge, MA

CLIENT:
MIT IMCo.

ARCHITECT:
Elkus-Manfredi Architects

GENERAL CONTRACTOR:
Turner Construction Company

SCOPE:
• **Revolving doors**
• **Aluminum swing doors**



Ipswich Bay Glass Company, Inc.

420 Newburyport Turnpike, PO Box 511, Rowley, MA 01969 | p: 978-948-6644 | f: 978-948-2995 | sales@IBGlass.com | IBGlass.com