



PROJECT REFERENCE

ONE CHANNEL CENTER

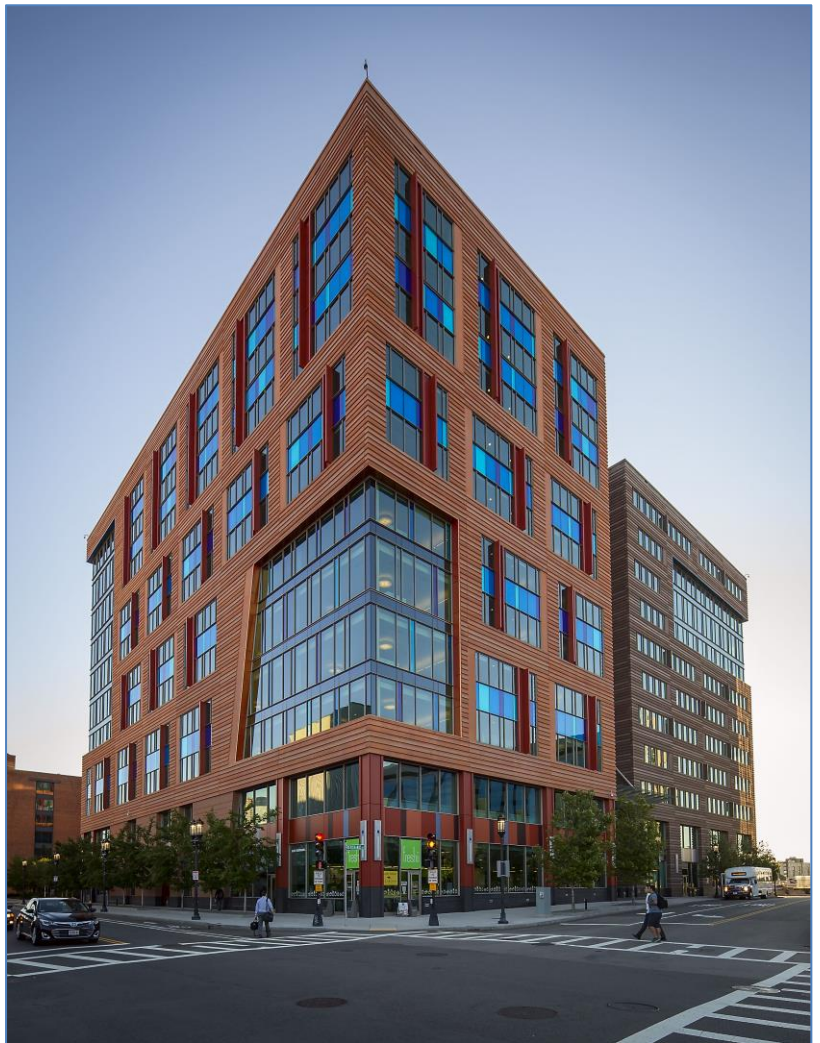
LOCATION:
Boston, MA

CLIENT:
Commonwealth Ventures, LLC

ARCHITECT:
ADD, Inc.

GENERAL CONTRACTOR:
Suffolk Construction Co., Inc.

SCOPE:
• **Aluminum curtainwalls**
• **Composite aluminum panels**
• **Phenolic panels**
• **Entrances**



Ipswich Bay Glass Company, Inc.

420 Newburyport Turnpike, PO Box 511, Rowley, MA 01969 | p: 978-948-6644 | f: 978-948-2995 | sales@IBGlass.com | IBGlass.com