



PROJECT REFERENCE

TUFTS UNIVERSITY

LOCATION:
Medford, MA

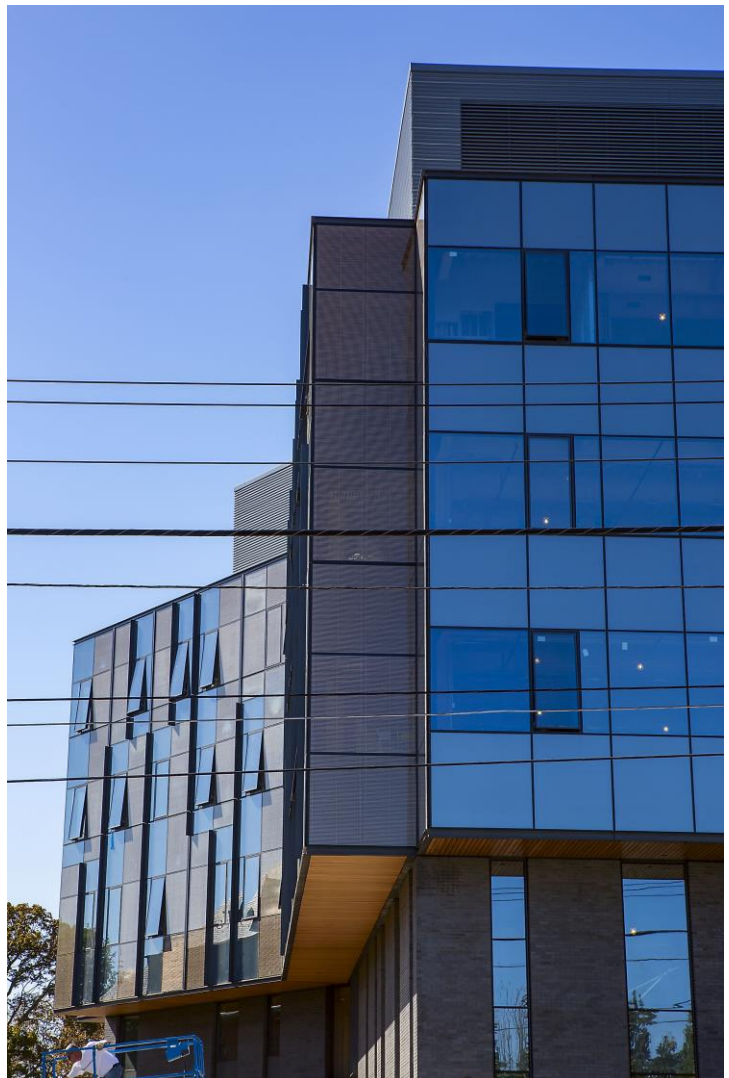
CLIENT:
Tufts University

ARCHITECT:
Payette

GENERAL CONTRACTOR:
Turner Construction Company

SCOPE:

- Triple glazed unitized curtainwall
- Composite metal panel rainscreen
- Wood rainscreen soffits
- Skylight
- Entrances



Ipswich Bay Glass Company, Inc.

420 Newburyport Turnpike, PO Box 511, Rowley, MA 01969 | p: 978-948-6644 | f: 978-948-2995 | sales@IBGlass.com | IBGlass.com