



PROJECT REFERENCE

TWENTY/20 NORTHPOINT

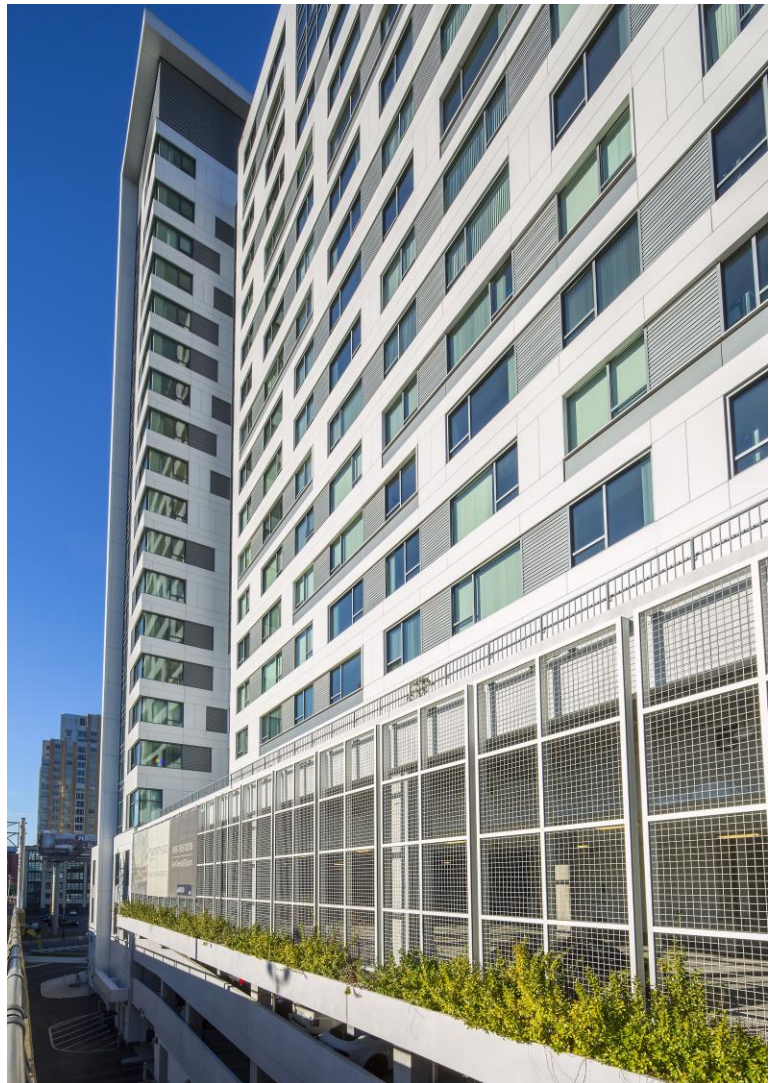
LOCATION:
Cambridge, MA

CLIENT:
HYM Investment Group LLC

ARCHITECT:
CBT Architects

GENERAL CONTRACTOR:
John Moriarty & Associates

SCOPE:
• **Aluminum rainscreen panels**
• **Pre-glazed punched curtainwalls**
• **Unitized multi-floor curtainwalls**
• **Corrugated panels**



Ipswich Bay Glass Company, Inc.

420 Newburyport Turnpike, PO Box 511, Rowley, MA 01969 | p: 978-948-6644 | f: 978-948-2995 | sales@IBGlass.com | IBGlass.com