



## PROJECT REFERENCE

### PIER 4

LOCATION:  
**Boston MA**

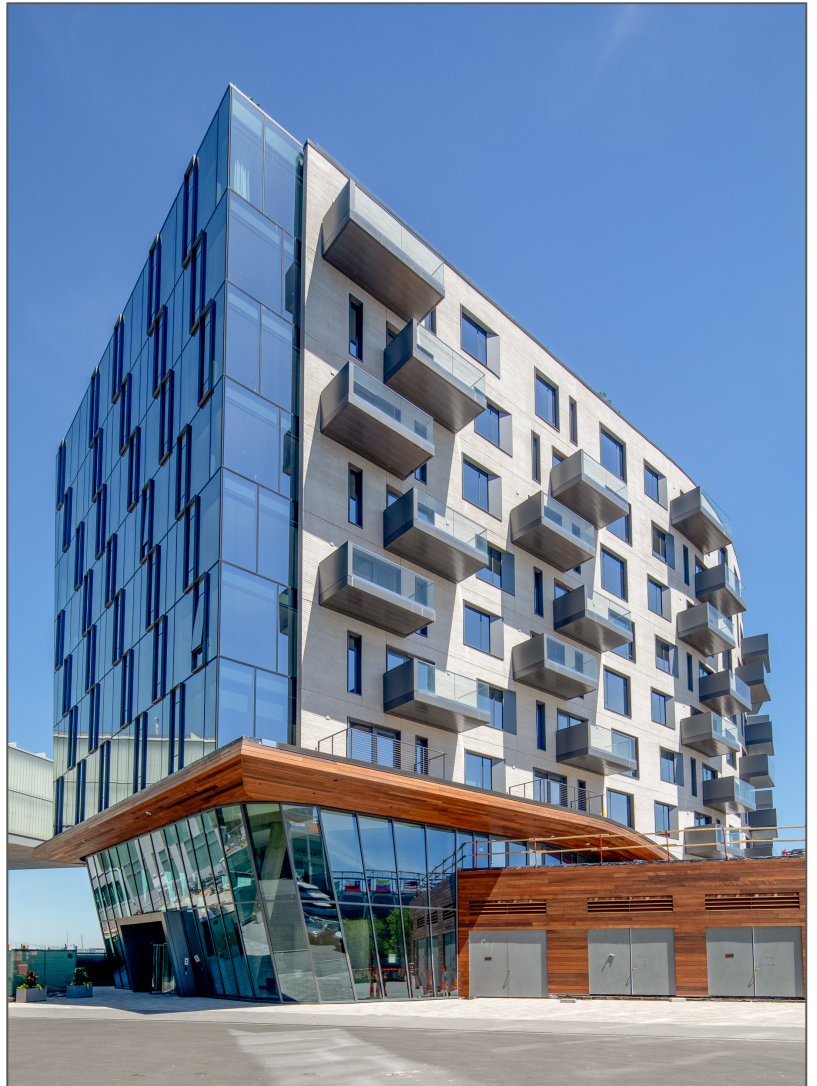
CLIENT:  
**Tishman Speyer**

ARCHITECT:  
**CBT Architects**

GENERAL CONTRACTOR:  
**Turner Construction Company**

SCOPE:

- *Pre-glazed punched windows*
- *Unitized curtainwalls*
- *Stick-built curtainwalls*
- *Aluminum entrances*
- *Rainscreen panels*
- *All-glass railings*



**Ipswich Bay Glass Company, Inc.**

420 Newburyport Turnpike, PO Box 511, Rowley, MA 01969 | p: 978-948-6644 | f: 978-948-2995 | sales@IBGlass.com | IBGlass.com